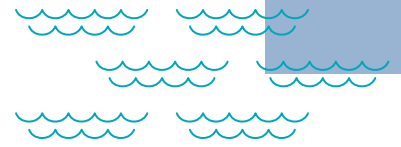


# Our Keadby site

## Investing in our Communities



Our 732MW Keadby 1 Power Station has been a key part of the local area since the 1990's and is a flexible gas-fired plant. Located nearby is SSE Thermal's 893MW Keadby 2 Power Station, which entered into commercial operations in 2023 and is the most efficient plant of its type in the UK and Europe - and one of the most efficient in the world.

The Keadby site will continue to be a key area of focus for SSE Thermal as we move to a net zero future, with consent for a Carbon Capture power station at the site, and plans to develop a hydrogen fuelled 900MW plant which could be operational from 2030.

Delivering value and making meaningful contribution to the Keadby community is at the heart of our plans. We are committed to our role as a responsible neighbour and are working across the region to invest in communities through engagement, support and funding.

### A dedicated member of the Keadby community

We know that understanding our communities is key to successful delivery for SSE Thermal which is why we appoint a dedicated colleague to manage relationships and act as a single point of contact for our communities and stakeholders. Embedding ourselves into the local area allows us to understand local opportunities and impacts that may come along with our operations and means that we can add real value. Emma Clark is SSE Thermal's dedicated Community Liaison officer the Keadby site. Emma joined our team in 2023 and has been working with communities, local groups, businesses, schools and colleges. **Emma can be contacted directly, with her details available on our dedicated project website: [www.ssethermal.com/keadby](http://www.ssethermal.com/keadby)**

### SSE Volunteering

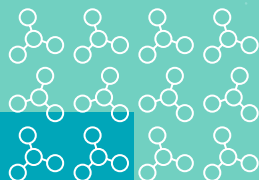
Providing a helping hand to community projects is a key part of our commitment to the Keadby area, activities such as local litter picks and volunteering time for the development of community projects allow us to be part of the area. All SSE colleagues across the UK and Ireland are empowered to support community projects by giving one day of their working year to do so. **We would love to hear from local groups that could benefit from our help.**

### Educational Outreach

Engaging with students through schools and colleges allows us to help inform and educate young people about our projects and how the work we are doing fits with their net zero future. We are delivering a range of engagement activities and education tools, targeting young people at varying stages and would like to understand further focus and ideas for the Peterhead area. Peter and Paula, our Power Plant Pals, are one example of how we are engaging with students at an early age to help them understand how Keadby will play its part in our transition to net zero, sharing information about Carbon Capture and Hydrogen technologies and fuels for the future. **We would be delighted to hear from local schools that would be interested in learning more about the transition to net zero.**

### Enhancing the Natural Environment

SSE Thermal is committed to enhancing the natural environment on and around our site. For future projects at Keadby, consented after 2023, SSE Thermal has committed to delivering no 'net loss' in biodiversity and 'net gain' in biodiversity on those consented from 2025 onwards and will be working closely with the site to identify further biodiversity enhancement opportunities. **We would be keen to hear about any areas locally which you feel should be a focus for us**





## SSE Match Funding

Many of our colleagues live locally and are passionate about raising funds through sponsorship based fundraising. SSE Thermal provide match funding up to the value of £150 each year to support these activities and we will launch a campaign at Keadby to get more colleagues involved in this initiative.

## Inspiring the Next Generation

We know that we will require the skills and ambition of our next generation to deliver future projects. Decarbonisation and the industries that will support its delivery can provide long term opportunities for young people to live and prosper in the Humber region and we are committed to supporting communities to understand the potential on offer. SSE Thermal works closely with local secondary schools and colleges, attending careers fairs and workshops to raise aspirations, increase awareness of careers within the energy industry and help to promote jobs and careers opportunities on our site. **We continue to look for ways to support, please reach out to us with opportunities.**

## STEM Activities

Science, technology and engineering are central to the delivery of our projects. That's why we are working with schools, colleges and academic partners to develop STEM based learning packages for our next generation of energy leaders. SSE Thermal are also involved in the Women into Manufacturing and Engineering (WiME) Raising Aspirations, an initiative to encourage, inspire and help women to discover the opportunities available in manufacturing and engineering and working to attract more female applicants for STEM roles. **To learn more about our STEM activities and how you can be involved, visit our Keadby project website: [www.ssethermal.com/keadby](http://www.ssethermal.com/keadby)**

## Establishing and hosting Community Liaison Groups

A Community Liaison Group (CLG) is a local forum at which details and updates relating to our development and operations are shared, ensuring that communities are provided with up to date information and have the opportunity to ask questions and provide feedback to SSE Thermal representatives. CLG is already in place for the Keadby area, as a result of recent development and construction projects, and will continue to meet and membership reviewed ahead of any further construction activities at the site. Membership consists of locally elected representatives alongside project and station colleagues. Minutes for each CLG are shared online and to local community representatives. **If you are interested in representing your community please reach out to us to register your interest.**

## Working with the local Supply Chain

SSE Thermal is committed to using local businesses, suppliers and providers where possible. Alongside our delivery partners we engage via 'Meet the Buyer' events which provide an opportunity for suppliers to meet our project teams and learn more about the services that we are looking to procure **If you feel that you have a business or service that can support the delivery of projects at our Aldbrough site, please register your interest.**

## A dedicated fund for our Community

We are introducing a community investment fund of £25,000 per year for community projects in the Keadby area. The introduction of an annual fund will enable us to support organisations that are working to deliver benefits for the community in and around our existing site. SSE Thermal are working with local communities, community group representatives and stakeholders to design a fund that takes local needs and aspirations into consideration. **You can learn more about the community investment fund and how to apply on our website: [www.ssethermal.com/keadby](http://www.ssethermal.com/keadby)**

For more information please visit our website: [www.ssethermal.com/communities](http://www.ssethermal.com/communities)

If you would like to get in touch to provide ideas, comments or suggestions, please contact: [thermalcommunityinvestment@sse.com](mailto:thermalcommunityinvestment@sse.com)

