

Peterhead

SSE Thermal Community Investment Package



We are committed to our role as a responsible neighbour and are working to invest in the communities we operate in through engagement, support and funding. We are introducing a Community Investment Package, including a fund of £25,000 per year, for community projects around the existing Peterhead Power Station site.

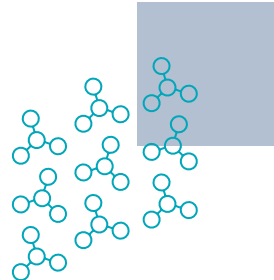
During March and April 2024, We held a consultation in the area around the Peterhead Power Station site to give stakeholders the opportunity to provide their thoughts and ideas and for us to capture this feedback. We are working with local communities, community group representatives and stakeholders to design a package that takes local needs and aspirations into consideration.

We held two drop in events at local venues to meet people in person, as well as providing the opportunity for people to ask questions and discuss ideas. We gathered thoughts and feedback via written and online feedback forms.

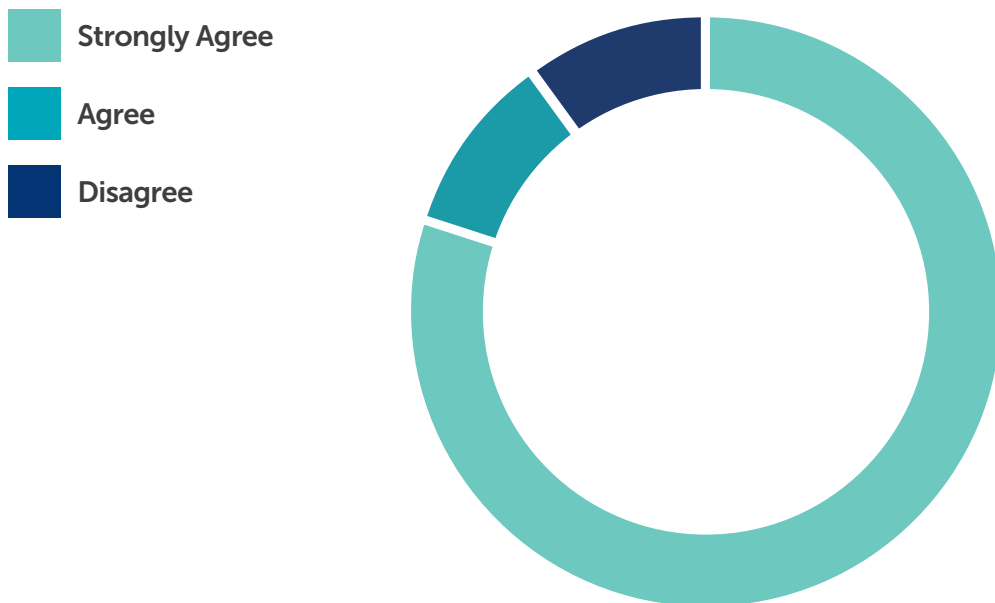
This report shows what you told us

100% of respondents **support** or **strongly support** the introduction of a Community Investment Fund in the area around Peterhead Power Station.

-  Strongly Support
-  Support



91% of respondents agree or strongly agree with the proposed geographical approach, which doesn't exclude any groups, charities or organisation from applying to the fund, but will prioritise projects in the Community Council areas of Boddam and Peterhead.



Priority will be given to projects which fall into a number of key areas, to ensure that local needs and the unique characteristics of the community is taken into account.

Suggested focus areas received during the consultation included:

- Poverty relief
- Community kitchens and food banks
- Dementia support
- Energy efficiency and reduction of energy use
- Local school support
- Female participation in sport
- Service provision, such as local clubs, activities or groups
- Local skills development
- Net zero/ carbon neutral education
- Enhancement of natural environment

Priority Areas for the Peterhead Fund

One of the aims of the consultation was to identify key areas of importance for funding in the communities around the Peterhead site. The feedback received identified three priority areas for this fund:

- Service provision, such as local clubs, events, activities or groups
- Help with cost of living rises, including poverty relief and local food bank support
- Energy efficiency and reduction of energy use

For more information please visit:

www.ssethermal.com/communities

