



Medway

SSE Thermal Community Investment Package

We are committed to our role as a responsible neighbour and are working to invest in the communities we operate in through engagement, support and funding. We are introducing a Community Investment Package, including a fund of £25,000 per year, for community projects around the existing Medway Power Station site.

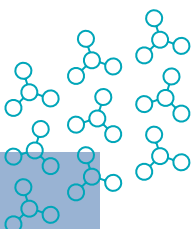
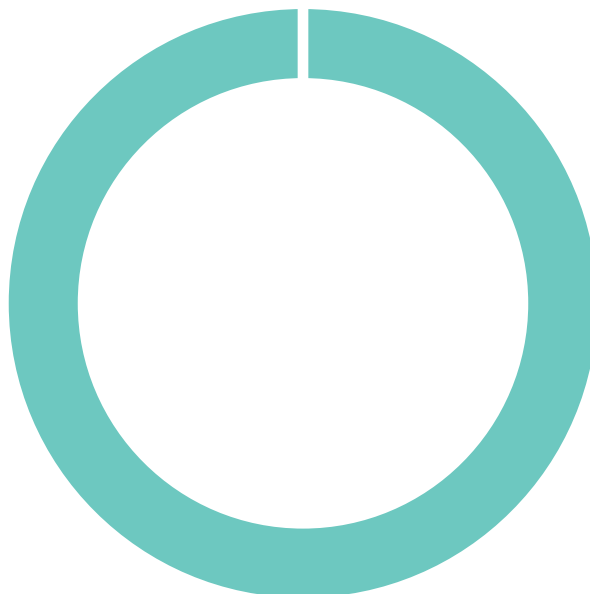
During June and July 2024, we held a consultation in the area around the Medway site to give stakeholders the opportunity to provide their thoughts and ideas and for us to capture this feedback. We are working with local communities, community group representatives and stakeholders to design a package that takes local needs and aspirations into consideration.

We held two drop in events at local venues to meet people in person, as well as providing the opportunity for people to ask questions and discuss ideas. We gathered thoughts and feedback via written and online feedback forms.




This report shows what you told us

100% of respondents **strongly support** the introduction of a Community Investment Fund in the area around the Medway Power Station site.

Strongly Support



Some respondents disagreed with the proposed geographical approach, which doesn't exclude any groups, charities or organization from applying to the fund, but will prioritize those groups in the parishes of the Isle of Grain, Allhallows and Stoke Kent. However, there were a number of suggestions that the entire Hoo Peninsula should be included, which is feedback we will take into account when making funding decisions.

-  Strongly Agree
-  Neutral
-  Disagree



Priority will be given to projects which fall into a number of key areas, to ensure that local needs and the unique characteristics of the community are taken into account.

Suggested focus areas received during the consultation included:

- Food bank provision
- Skills improvement for young people
- Village hall improvements
- Community support groups

Priority Areas for the Medway Fund

One of the aims of the consultation was to identify key areas of importance for funding in the communities around the Medway site. The feedback received identified three priority areas for this fund:

- Service provision, such as local clubs, events, activities or groups
- Help with cost of living rises, including poverty relief and local food bank support
- Local venue and amenity improvements

For more information please visit:

www.ssethermal.com/communities