



# Atwick

## SSE Thermal Community Investment Package

We are committed to our role as a responsible neighbour and are working to invest in the communities we operate in through engagement, support and funding. We are introducing a Community Investment Package, including a fund of £25,000 per year, for community projects around the existing Atwick Gas Storage site.

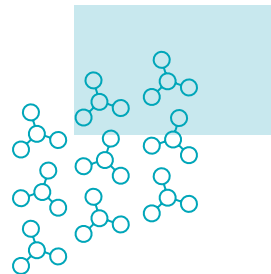
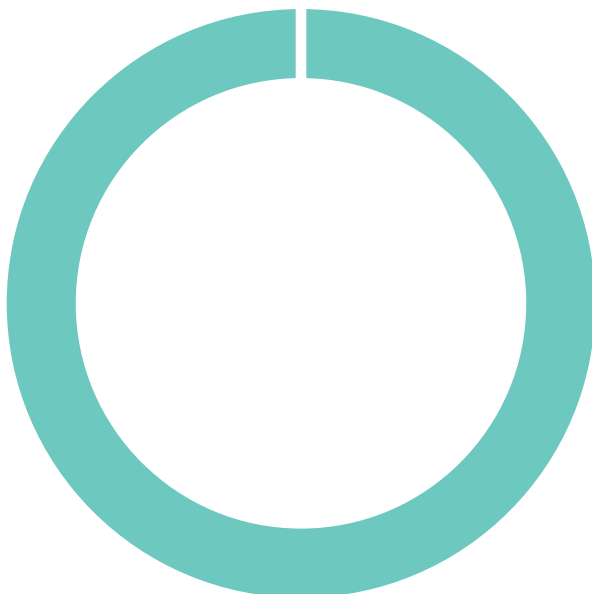
During June and July 2024, we held a consultation in the area around the Atwick Gas Storage site to give stakeholders the opportunity to provide their thoughts and ideas and for us to capture this feedback. We are working with local communities, community group representatives and stakeholders to design a package that takes local needs and aspirations into consideration.

We held two drop in events at local venues to meet people in person, as well as providing the opportunity for people to ask questions and discuss ideas. We gathered thoughts and feedback via written and online feedback forms.

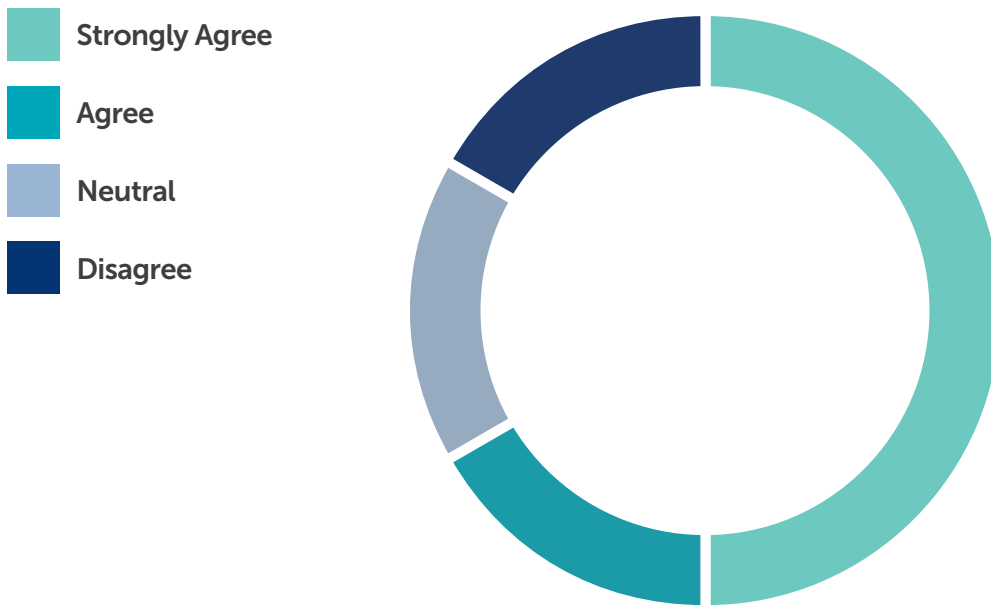
### This report shows what you told us

**100%** of respondents **strongly support** the introduction of a Community Investment Fund in the area around the Atwick Gas Storage site.

 Strongly Support



**83%** of respondents **strongly agree, agree** or are **neutral** with the proposed geographical approach, which doesn't exclude any groups, charities or organization from applying to the fund, but will prioritize those groups in the parishes of Atwick, Bewholme and Skipsea.



Priority will be given to projects which fall into a number of key areas, to ensure that local needs and the unique characteristics of the community are taken into account.

**Suggested focus areas received during the consultation included:**

- Local skills development and STEM skills
- Energy efficiency, and service provision
- STEM education and local clubs/activities
- Activities to help ease loneliness
- Village hall facilities
- Wildlife habitats

## Priority Areas for the Atwick Fund

One of the aims of the consultation was to identify key areas of importance for funding in the communities around the Atwick site. The feedback received identified three priority areas for this fund:

- Service provision, such as local clubs, events, activities or groups, including transport services and accessibility
- Biodiversity, habitat and natural environment enhancement
- Local venue and amenity improvements

For more information please visit:

[www.ssethermal.com/communities](http://www.ssethermal.com/communities)

